

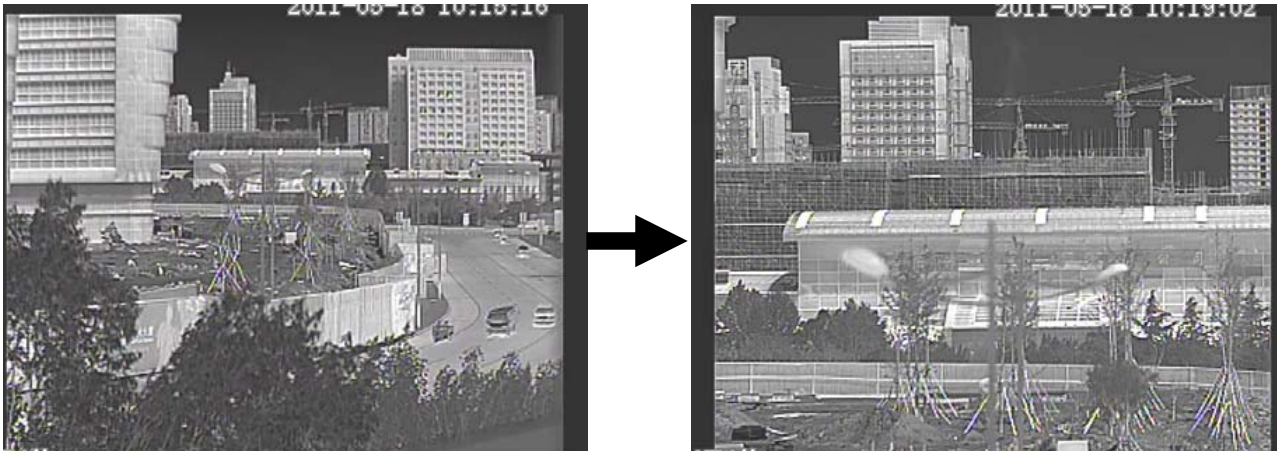
THC 185 very long range thermal camera



This is a very long range camera with integrated PT unit. The camera have an integrated continuous zoom optics and high sensitivity. System is IP based and can be controlled by a web browser software. All parts are rugged and designed for outdoor operation.

<p>Effecting Distance</p>	<p>Detecting distance: 8000m for vehicles, 2800m for people in total darkness; Recognition distance: 2000m for vehicles and 700m for people in total darkness; Identification distance: 1000m for vehicles and 350m for people in total darkness.</p>
<p>Detector</p>	<p>1. fourth generation of uncooled focal plane infrared detector; 2. resolution at 324×256 pixels; 25Hz 3. spectrum range 8~14µm; 4. NETD 35mk</p>

THC 185 very long range thermal camera



Lens	<ol style="list-style-type: none"> 1. Focal length: 36~180mm continuous optical zooming; 2. F=1.2; 3. FOV: 3.9° ×2.9° ~19° ×14.5° 4. GE or Zn-Se material;
Image Process	<ol style="list-style-type: none"> 1. Built-in correcting circuits, no need of TEC; working temperature -40~+75°C, good picture uniformity 2. Dynamic Detail Enhancer(DDE) 3. 10 pseudo color and hot black/hot white formats 4. Automatic Gain Control(AGC) technology 5. 2x digital magnification
Interface	<ol style="list-style-type: none"> 1. RS485(PELCO D protocol, Baud rate 2400bps/s), RS-232(optional) 2. OSD menu 3. PAL compound video output 4. AC220V/AC24V/DC12V(optional) 5. waterproof navigation outlet
Size and Weight	<ol style="list-style-type: none"> 1.size: 380mm × 190mm × 205mm 2.weight: 7Kg
Others	<ol style="list-style-type: none"> 1.aluminum shell, 99.999% nitrogen inside 2.working temperature: -25°C~+55°C 3.storage temperature: -40°C~+65°C 4. under PH6.5~7.2, continuous spraying fog for 48 hours 5. power consumption: 8w(normal)