

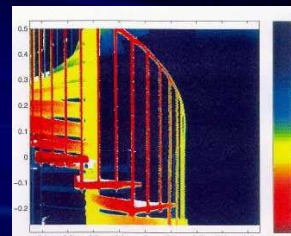
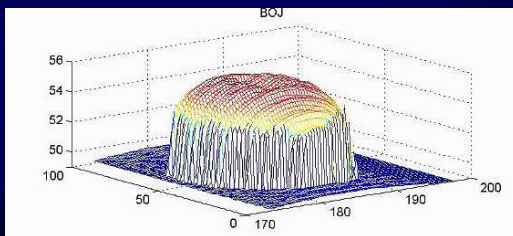
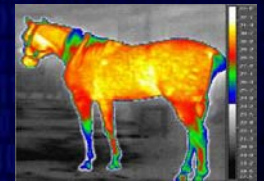
- Established Since 1977
- Specialize in Electro Optical Area

Products Summary:

- Active gated Laser Camera
- Protectomatic – Harbour Security System
- Laser Rader (Ladar) System
- Airborne Sensors



- Thermal Imager
- High Resolution Camera
- Night Vision System
- Illumination System
- Laboratory lasers
- Distance meter
- LED Lamps



Electrical Optical Sensors

Lynx Series of Gated Vision System (Active Gated Laser Camera System)



SEA-LYNX



NORD-LYNX



MINI-LYNX



SUB SEA-LYNX

SEA-LYNX & LORD LYNX

- Gated Range: 40 to 1,500m
- Practical range: 40 to 1,000 m for dark targets
- Practical distance: 40 to 1,200m for white targets
- Practical distance: 40 to 1,500m for reflexes and life vests
- Distance resolution: 1 – 2 m for zone distance and depth
- Image intensifier: Gen 2 intensifier with 25mm cathode
- Image amplification: 35,000 times
- Resolution of intensifier: 44 lines per mm over 25mm diameter
- 420 TV lines black and white image
- Spectral response: From Blue/Green to about 870 nm in near IR
- Field of View: 7.5 degree / about 15m at 100m in distance
- Laser safety class: Class 3B at less 6 m in distance, Class 1 at longer range



MINI-LYNX



- Hand-held binocular style gated system for visibility under extreme condition
- Penetrates through inclement weather and light textiles
- Maximum range of 500m with gated operation from 40m and up
- Image intensifier: Gen. 2 intensifier with 25 mm cathode
- Image amplification: 35,000 times
- Spectral response: From Blue/Green to about 870 nm in near IR
- Field of View: 7.5 degree/ about 15m at 100m in distance
- Gated Range: 40 to 1,500m
- Practical range: 40 to 1,000 m for dark targets
- Practical distance: 40 to 1,200m for white targets
- Practical distance: 40 to 1,500m for reflexes and life vests
- Distance resolution: 1-2 m for zone distance and depth

SUB SEA-LYNX



- Operation depth to 350m
- Use Green laser
- Maximum distance is 100m can be reach 100m when normal visibility is 20 – 30m measured with white square test method
- Efficient in searching over large area for lost ports, sub marine navigation and geographical mapping of sub sea environment.

Gating Technology – Operating at Night only

Image Intensifier
operate at 2-4
nano second



Laser Pulse, 2m depth at 5,000Hz

Reflexes of object



Object in front of
the camera
appear as black
shadows

Object behind
are not visible

Image Intensifier Screen



Same Yacht

Distance Setting of Gated Camera

Settings of a Gated Camera

Passive Mode:

- Camera working passively with normal performance
- Ambient light is intensified to 35,000 x amplification

Active Mode:

- Camera working with the support of a Continuous laser light (not gated)
- Like a lamp and doesn't require ambient light
- Particles in the field of view have large influence
- Good for visibility through smoke

Gated Mode:

- Camera operated in gated mode
- Operator sets the distance to and depth of the viewing area

Combined Mode:

- Camera is gated but scans all over the total depth of view
- Provide gated performance over the whole viewed area simultaneously
- Very practical when an overview is needed
- Normal setting for navigation and Search & Rescue

Views of the Camera



Positive Viewing

- Viewed objects are in the illuminated field and appear white in a grayscale



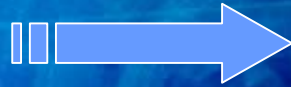
Negative Viewing

- viewed object is in front of an illuminated white background
- object is a black shadow on a white background
- Efficient and simple to operate

Penetration Power



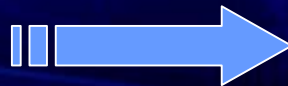
- 600m away with dense snow fall
- Illuminated by IR



- Gated mode
- Provide clear image



- the textile when put in place. This cuts about 90 % of all light and is very dense optically



- Gated mode can go through the textile and we can see the license plate.