

A

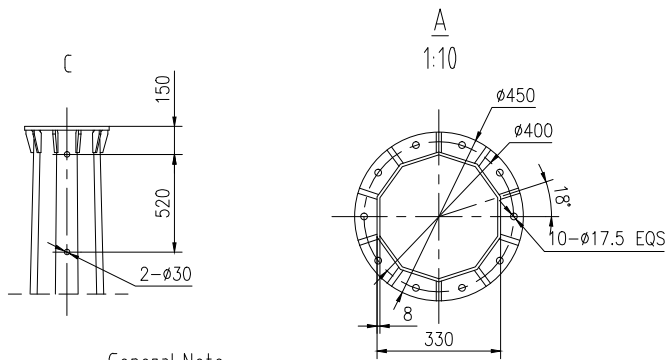
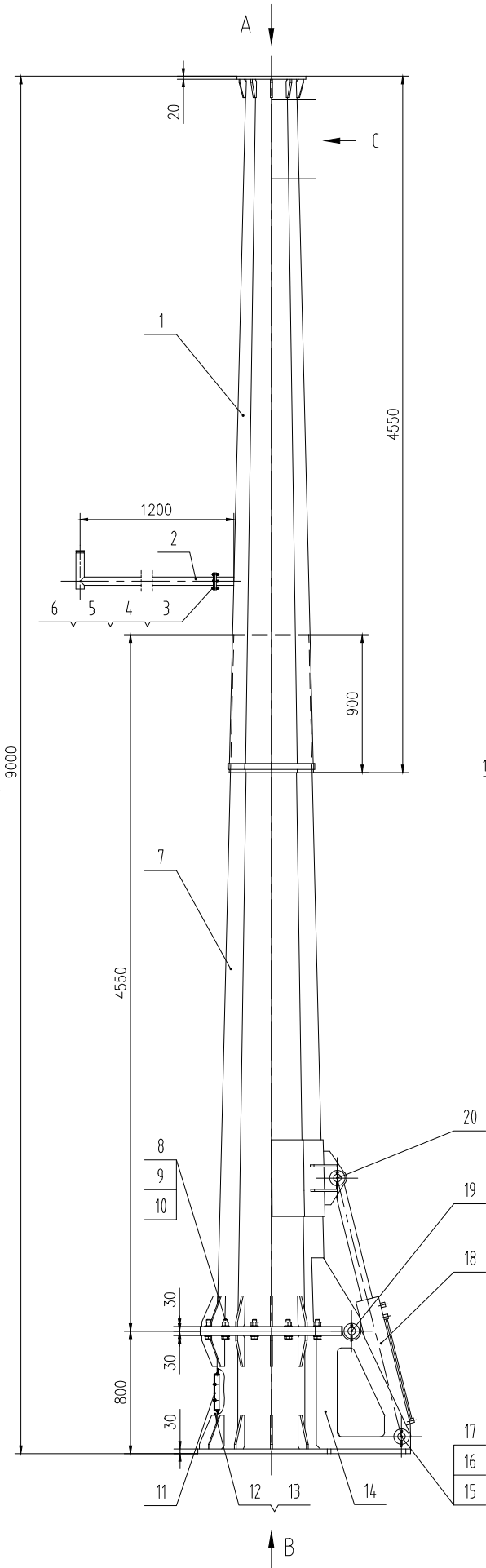
B

C

D

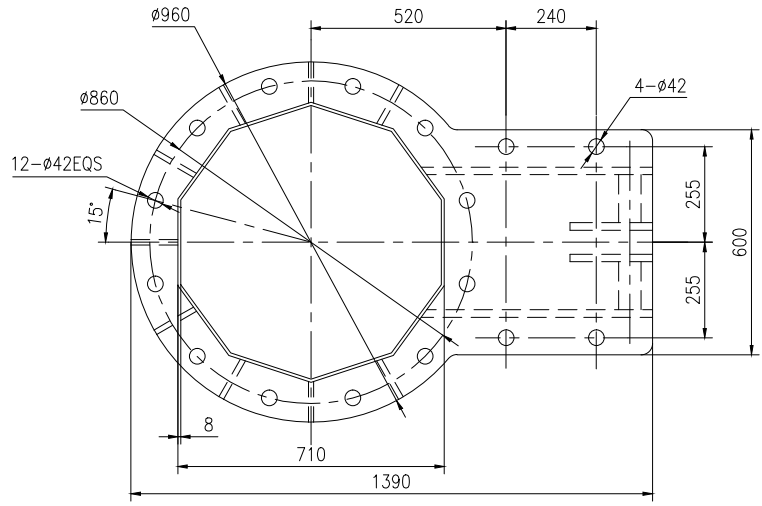
E

F



General Note

1. Welding and quality inspection are carried out with national standards GB/T 12467;
2. descaling after welding then overall galvanized: Average minimum thickness of the galvanization coating is 85µm(include the inner surface of the tower), other supervision aspects are implemented in accordance with GB/T 13912.
3. ivory painting on the outer surface (Color Number:RAL9010).
4. The perpendicularity between tower section and the flange should not exceed 1.5mm.the parallelism between the top flange and the bottom flange should not exceed 2mm.the plainness of the two working surfaces of the tower flange should not exceed 0.35mm.
5. The tower should pass the assemble test before delivery.



| | | | | | | |
|----|-------------------|----------------------|----|-------|--|--------------|
| 17 | GB/T91-2000 | Cotter 10x90 | 3 | | | ISO1234-1997 |
| 16 | TV-YSS050-09-05-A | Plain washer | 3 | Q235B | | |
| 15 | TV-YSS050-09-07-A | Bottom shaft pin | 1 | 40Cr | | |
| 14 | TV-YSS050-09-04-A | Pedestal | 1 | Q345B | | |
| 13 | GB/T95-2002 | Plain washer 6 | 2 | 100Hv | | |
| 12 | GB/T 70.1-1985 | Bolt M6X12 | 2 | | | |
| 11 | TV-YSS050-09-09-A | Cover | 1 | Q235B | | |
| 10 | GB/T 6170-2000 | Nut M27 | 12 | | | |
| 9 | GB/T97.1-2002 | Plain washer (27) | 24 | 200Hv | | |
| 8 | GB/T5782-2000 | Bolt M27X110 | 12 | | | 8.8 |
| 7 | TV-YSS050-09-02-A | Tower bottom section | 1 | Q345B | | |
| 6 | GB/T 6170-2000 | Nut M8 | 4 | | | |
| 5 | GB/T95-2002 | Spring washer 8 | 4 | 100Hv | | |
| 4 | GB/T93-1987 | Plain washer 8 | 4 | 65Mn | | |
| 3 | GB/T 5780-2000 | Bolt M8X35 | 4 | | | 4.8 |
| 2 | TV-YSS050-09-03-A | Anemometer support | 1 | Q235B | | |
| 1 | TV-YSS050-09-01-A | Tower top section | 1 | Q345B | | |

| | | | | | | |
|----|-------------------|--------------------|---|------|--|--|
| 20 | TV-YSS050-09-05-A | Top shaft pin | 1 | 40Cr | | |
| 19 | TV-YSS050-09-06-A | Middle shaft pin | 1 | 40Cr | | |
| 18 | TV-YSS050-09-10-A | Hydraulic cylinder | 1 | | | |

| | | | | |
|------------|-----|----------|-----------------|------|
| Marker | #Ty | Revision | Signature | Date |
| Created by | | | Standardized by | |
| Calated by | | | Determined by | |
| Checked by | | | Approved by | |
| Technology | | | Date | |

V-5KW 9m Tower

TV-YSS050-09-00-A

| | | |
|--------------|--------|-------|
| Pattern Mark | Weight | Scale |
| | | 1:20 |
| Total: | | Page: |
| | | |

Q345B

A

B

C

D

E

F