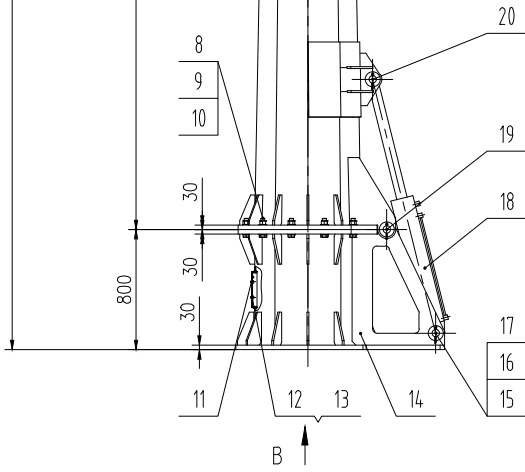
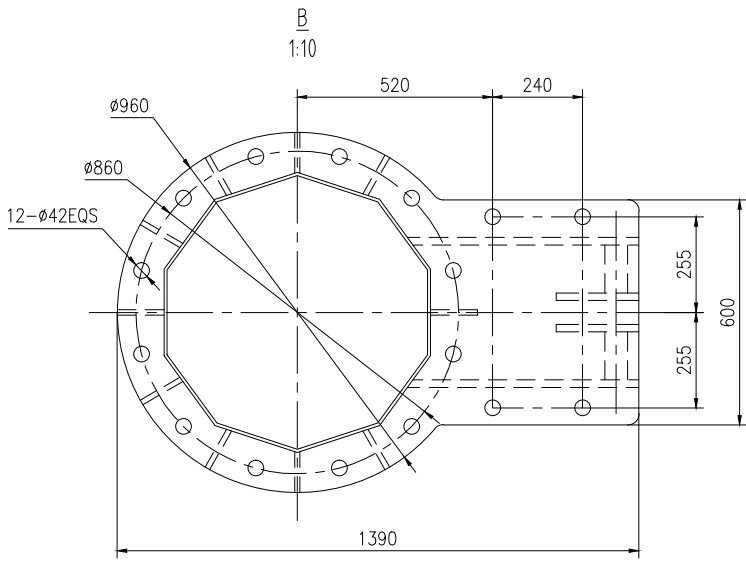


General Note

1. Welding and quality inspection are carried out with national standards GB/T 12467;
2. descaling after welding then overall galvanized: Average minimum thickness of the galvanization coating is 85µm(include the inner surface of the tower), other supervision aspects are implemented in accordance with GB/T 13912.
3. ivory painting on the outer surface (Color Number: RAL9010), the film should smooth without wrinkle, air bubbles, chromatic aberration and other appearance badness, other supervision aspects are implemented in accordance with GB/T 13912.
4. The perpendicularity between tower section and the flange should not exceed 1.5mm. the parallelism between the top flange and the bottom flange should not exceed 2mm. the plainness of the two working surfaces of the tower flange should not exceed 0.35mm.
5. The tower should pass the assemble test before delivery.



Item	Code	Name	QTY	Material	Single Weight	Total Weight	Remarks
16	TV-YSS050-12-08-A	Plain washer	3	Q235B			
15	TV-YSS050-12-07-A	Bottom pin shaft	1	40Cr			
14	TV-YSS050-12-04-A	Pedestal	1	Q345B			
13	GB/T95-2002	Plain washer 6	2	100Hv			
12	GB/T 70.1-1985	Bolt M6X12	2				
11	TV-YSS050-12-09-A	Cover	1	Q235B			
10	GB/T 6170-2000	Nut M27	12				
9	GB/T97.1-2002	Plain washer (27)	24	200Hv			
8	GB/T5782-2000	Bolt M27X110	12				8.8
7	TV-YSS050-12-02-A	Tower bottom section	1	Q345B			
6	GB/T 6170-2000	Nut M8	4				
5	GB/T95-2002	Plain washer 8	4	100Hv			
4	GB/T93-1987	Spring washer 8	4	65Mn			
3	GB/T 5780-2000	Bolt M8X35	4				4.8
2	TV-YSS050-12-03-A	Anemometer support	1	Q235B			
1	TV-YSS050-12-01-A	Tower top section	1	Q345B			

20	TV-YSS050-12-05-A	Top pin shaft	1	40Cr			
19	TV-YSS050-12-06-A	Middle pin shaft	1	40Cr			
18	TV-YSS050-12-10-A	Hydraulic cylinder	1				
17	GB/T91-2000	Cotter 10x90	3				ISO1234-1997

V-5KW 12m Tower

TV-YSS050-12-00-A

Pattern Mark Weight Scale

Total: Page: 1:25

Q345B

Aeolos Wind Energy Co.,LTD.