

# Perlight Original

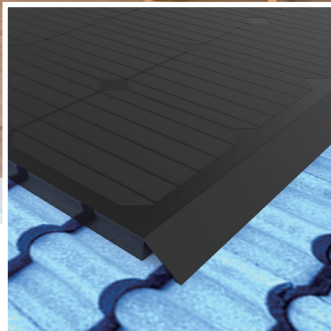
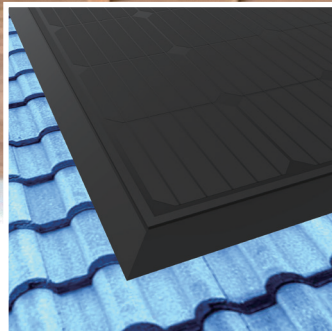
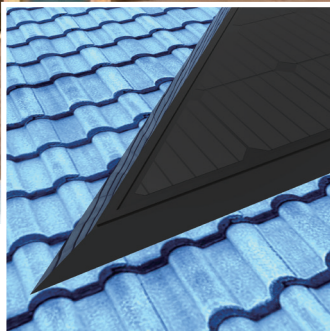
The Customized Solar Roof Solution



**PERLIGHT**  
smart.black



PERLIGHT

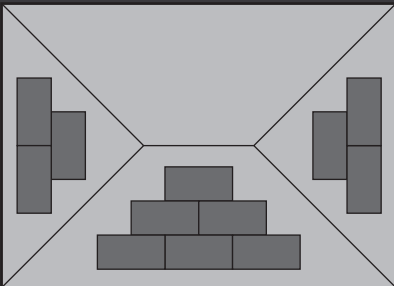


Maximize Solar Roof Output

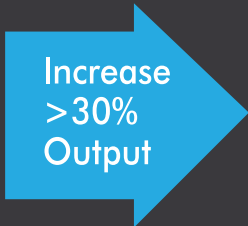


Architecture Aesthetics

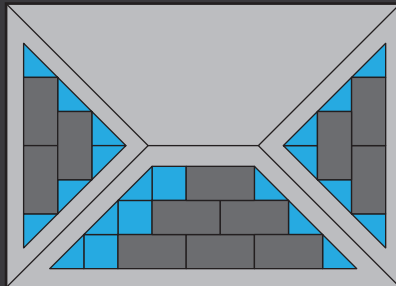
Installed Capacity **3.42KWp**



PLM-285M-60 × 12 PCS



Installed Capacity **5.19KWp**

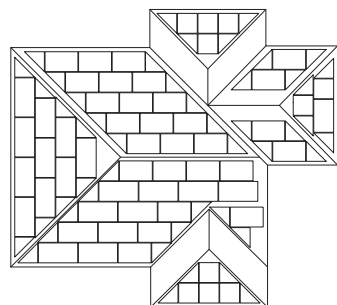
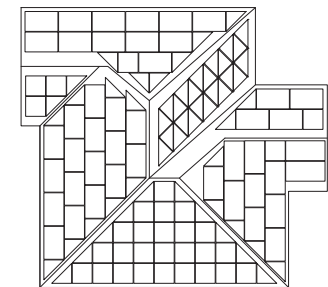
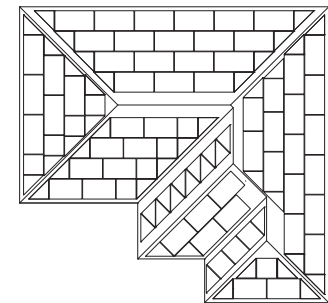
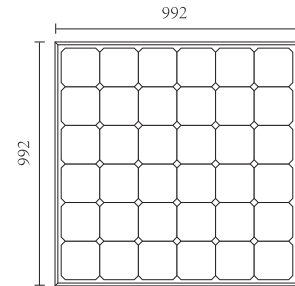
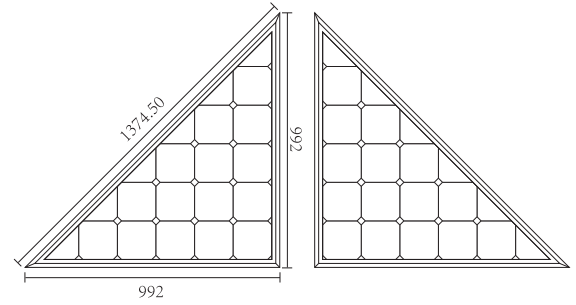


PLM-285M-60 × 12 PCS  
PLM-170M-36 × 3 PCS  
PLM-70M × 18 PCS

## ELECTRICAL PERFORMANCE

Module type			PLM-065M-15	PLM-070M-15
Size of module			992×992×1374.50mm	
Power output	$P_{max}$	W	65	70
Power output tolerances	$\Delta P_{max}$	%	0 - 3	0 - 3
Voltage at Pmax	$V_{mpp}$	V	15.59	15.82
Current at Pmax	$I_{mpp}$	A	8.34	8.85
Open-circuit voltage	$V_{oc}$	V	19.1	19.62
Short-circuit current	$I_{sc}$	A	8.92	9.24
Module Efficiency	Eff.	%	13.21	14.23

STC: 1000W/m<sup>2</sup> irradiance, 25°C cell temperature, AM 1.5g spectrum according to EN 60904-3.



## ELECTRICAL PERFORMANCE

Module type			PLM-150M-36	PLM-160M-36	PLM-170M-36
Size of module			992×992×35mm		
Power output	$P_{max}$	W	150	160	170
Power output tolerances	$\Delta P_{max}$	%	0 - 3	0 - 3	0 - 3
Voltage at Pmax	$V_{mpp}$	V	18.3	19.01	19.04
Current at Pmax	$I_{mpp}$	A	8.2	8.42	8.93
Open-circuit voltage	$V_{oc}$	V	22.8	23.01	23.61
Short-circuit current	$I_{sc}$	A	8.78	8.97	9.31
Module Efficiency	Eff.	%	15.24	16.26	17.28

STC: 1000W/m<sup>2</sup> irradiance, 25°C cell temperature, AM 1.5g spectrum according to EN 60904-3.

## THERMAL CHARACTERISTICS

Nominal operating cell temperature	NOCT	°C	45±2
Temperature coefficient of Pmax	$\mu$	%/°C	-0.40
Temperature coefficient of Voc	$\beta_{Voc}$	%/°C	-0.30
Temperature coefficient of Isc	$\alpha_{Isc}$	%/°C	0.06
Temperature coefficient of Vmpp	$\beta_{Vmpp}$	%/°C	-0.35

## OPERATING CONDITIONS

Max. system voltage	1000V <sub>DC</sub>
Limiting reverse current	15A
Operating temperature range	-40°C to 85°C
Max. static load front (e.g., snow)	5400Pa
Max. static load back (e.g., wind)	2400Pa
Max. hailstone impact (diameter / velocity)	25mm / 23m/s

Perlight Partners



**PERLIGHT**  
smart.black