

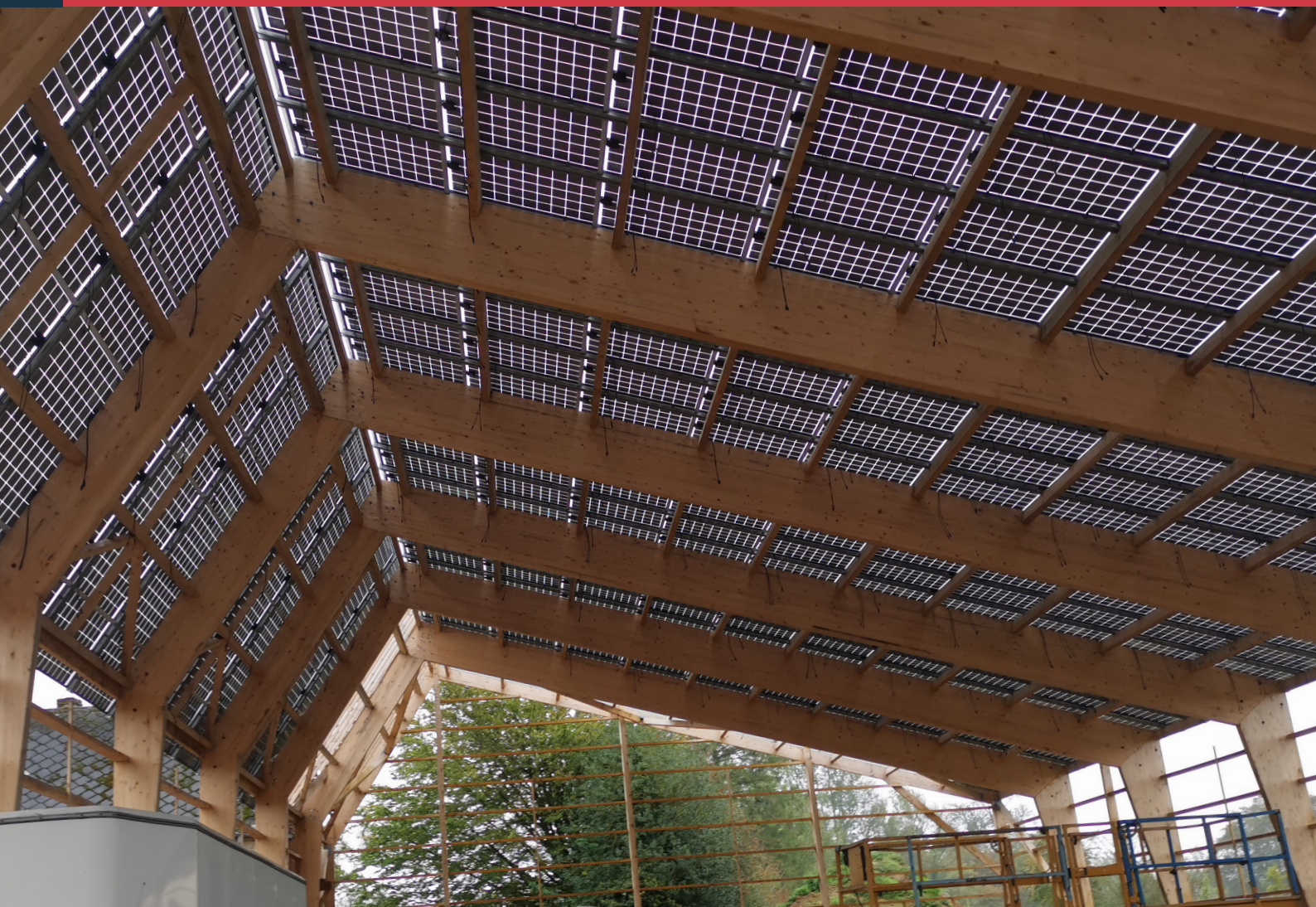
ADIWATT

Le photovoltaïque, une histoire d'experts

THE SOLAR MODULE INTEGRATION SOLUTION WITH FIXING FROM BELOW

Profil Evolution

The PROFIL EVOLUTION system adapts to all new or existing structures: roof, shade or roof terrace. The PROFIL EVOLUTION system is designed to achieve a waterproof photovoltaic roof without a steel roof. The modules act as a cover.



© La Jubarderie, 41270 Fontaine Raoul

✉ info@adiwatt.com ☎ 02-54-23-39-90

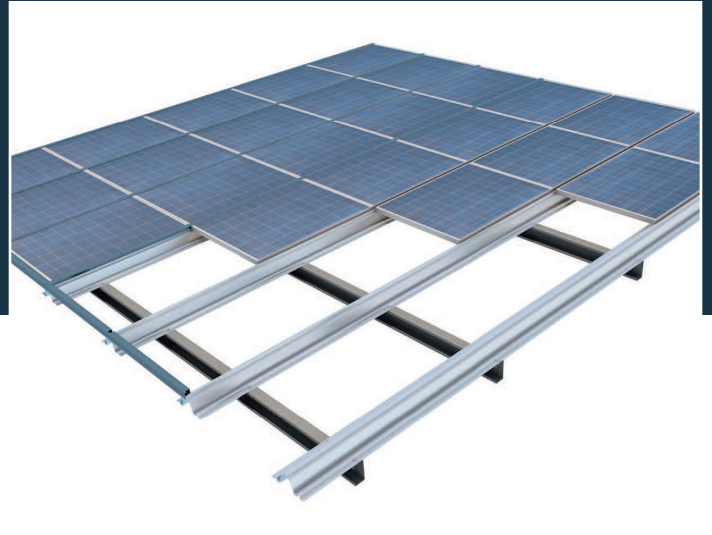


ISO 9001
BUREAU VERITAS
Certification



Special features

- The rafters developed by AdiWatt allow the modules to be installed by sliding, which reduces their handling.
- The shape of the rafters ensures the evacuation of rainwater and the installation of gutters between the modules guarantees watertightness.
- The modules are fixed from underneath for a more secure installation.
- The maintenance of the photovoltaic installation is simplified by an easy access to the modules.
- The materials used are recyclable and have been selected for their durability.
- Our solutions are designed and manufactured in France.



Technical characteristics

Field of application	New or existing roof / carport / roof terrace
Weather resistance	Cyclonic zone compatible
Module Orientation	Portrait or landscape according to the installation instructions
Module characteristics	Framed with frame return Thickness : 25 to 55mm
Screws and bolts	Stainless steel & zinc plated
Grounding	VERITAS test report
Guarantee	10 years
Certification	ETN

Our sales team is at your disposal for the study of your projects